

062613

W 1/4 COR SEC 22, T18N, R68W

RECEIVED
LARAMIE COUNTY
CHEYENNE, WY.

CERTIFIED LAND CORNER RECORDATION

'89 OCT 5 PM 3 00

DESCRIPTION OF CORNER EVIDENCE FOUND, AND ORIGINAL RECORD (If known)

FOUND A GRANITE STONE 15" X 8" X 4 SET VERTICALLY BUT W/ NO CHISEL MARKINGS VISIBLE. ORIGINAL CALL IS FOR A GRANITE 16" X 6" X 4. STONE FOUND FALLS WITHIN 2'± OF A TRUP SPLIT BETWEEN N.W & S.W COR'S SEC 22. ALSO LINES UP WITH FENCES TO THE EAST, SOUTH & WEST, ACCEPTED THE STONE.

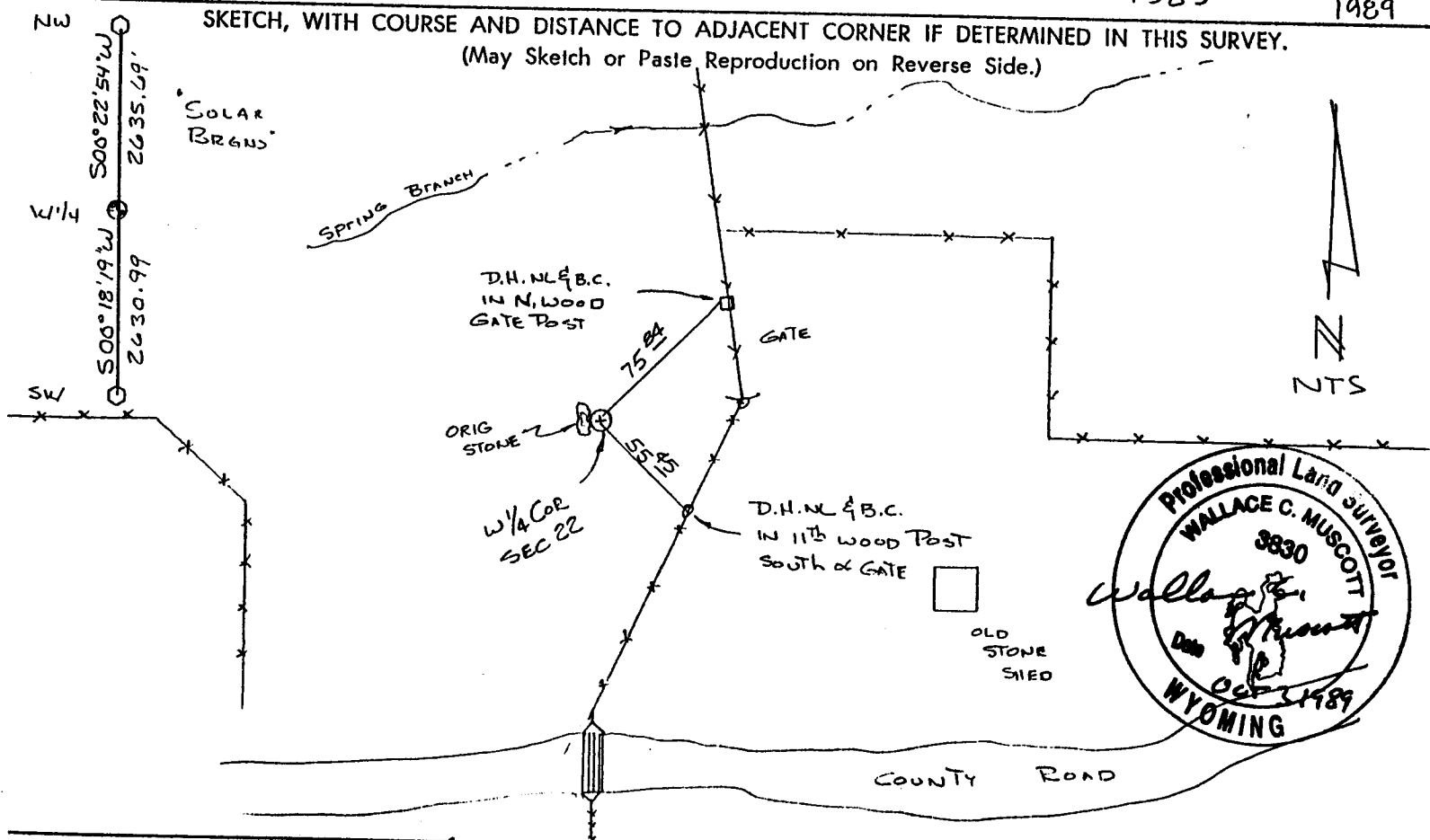
DESCRIPTION OF MONUMENT AND ACCESSORIES ESTABLISHED TO PERPETUATE THE ORIGINAL LOCATION OF THIS CORNER:

REMOVED STONE & IN ITS PLACE SET A 5/8" X 30" REBAR W/ A CORPS OF ENGINEERS BRASS CAP AT TOP, FLUSH WITH THE GROUND. STAMPED T18N, R68W
PLACED ORIG STONE ALONG SIDE & RAISED A MOUND OF STONE. S-21 1/4 S 22
TIED OFF AS SHOWN BELOW.

1989

MAY 16
1989

SKETCH, WITH COURSE AND DISTANCE TO ADJACENT CORNER IF DETERMINED IN THIS SURVEY. (May Sketch or Paste Reproduction on Reverse Side.)



I, Wallace C Muscott certify that I have carefully performed or reviewed the work done on the diagrammed corner as reported on this recordation form and approve the same.

Wallace C Muscott 3830
Signature of Surveyor Registration No.

STATE OF WYOMING,
Office of Clerk and Recorder,
County of _____

This "corner record" was filed for record on the _____ day of _____, 19____, was noted on the cross-index plat and is assigned page No. _____, in book No. _____.

County Official			
Cross Index No. <u>P-13</u>	T. <u>18N</u>	R. <u>68W</u>	Mer. <u>64</u>
_____	T. _____	R. _____	Mer. _____
_____	T. _____	R. _____	Mer. _____
_____	T. _____	R. _____	Mer. _____
_____	T. _____	R. _____	Mer. _____
_____	T. _____	R. _____	Mer. _____
_____	T. _____	R. _____	Mer. _____